

\$795,000

1,375 Sq. Ft.

Condo Fee
\$150/mo.

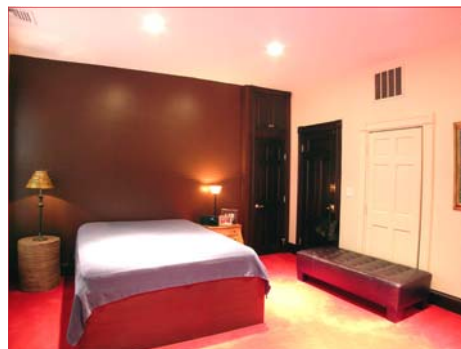
Taxes
\$4,862/year
(with residential
exemption)

474 Columbus Avenue, #2

SOUTH END CONDOMINIUM

Exquisite Oversized Floor Through Home

With over 1,300 sq feet on one level, this corner 2 bedroom plus den/2 bath home offers rare space and light. Gracious entry hall leads to large living room with bay window, significant original woodwork, fireplace and coffered ceilings. Den or third bedroom is directly off living area.



Wonderful dining bay highlights huge eat-in kitchen featuring granite counters, cherry cabinets and stainless steel appliances. Two bedrooms in the rear including huge master suite with great closets and marble bath with Jacuzzi tub.

Additionally, the home features central air conditioning and laundry hook-up. There is a private roof deck with spectacular skyline views. Located on restaurant row, this fine home is steps from everything the South End and Back Bay have to offer.



**Steven
Cohen**

Exclusive Listing
Agent
617-641-8778
24-hour voice mail

530 Tremont St.
Boston, MA 02118
617-592-8000
info@stevencohenteam.com
www.StevenCohenTeam.com
www.kw.com

Broker/salespersons represent the seller, not the buyer, in marketing, negotiation and sale of property unless otherwise disclosed. However, the broker/salesperson has an ethical and legal obligation to show honesty and fairness to the buyer in all transactions. All listing information is given in good faith and deemed reliable but is offered subject to errors and omissions, changes in price, prior sale, or withdrawal without notice.